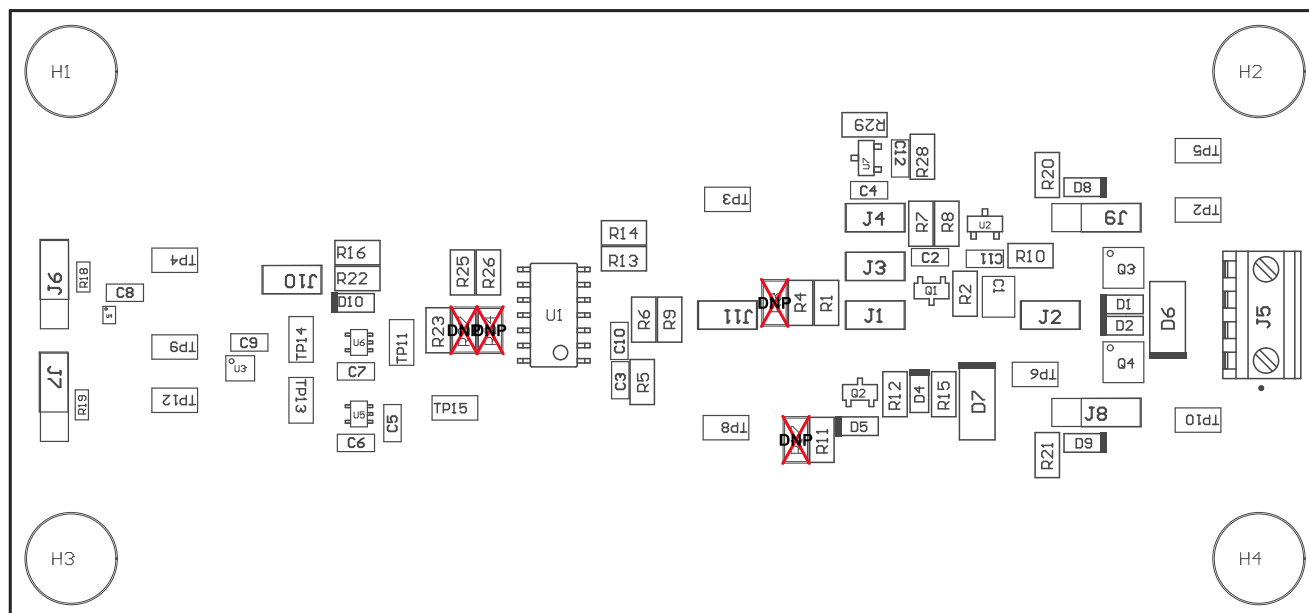


Z23 ■ These assemblies must comply with workmanship standards IPC-A-610 Class 2, unless otherwise specified.



COMPONENTS MARKED 'DNP' SHOULD NOT BE POPULATED.  
ASSEMBLY VARIANT: 001

|                                  |                                  |            |                                |
|----------------------------------|----------------------------------|------------|--------------------------------|
| PCB VIEWED FROM TOP SIDE         | BOARD #: TIDA-00377              | REV: Rev B | SUN REV: Not In VersionControl |
|                                  | TID #: TIDA-00377                |            |                                |
| PLOT NAME = Top Assembly Drawing | GENERATED : 8/25/2016 5:49:51 PM |            | TEXAS INSTRUMENTS              |



COMPONENTS MARKED 'DNP' SHOULD NOT BE POPULATED.

ASSEMBLY VARIANT: 001

|                                     |                                  |            |                                |
|-------------------------------------|----------------------------------|------------|--------------------------------|
| PCB VIEWED FROM BOTTOM SIDE         | BOARD #: TIDA-00377              | REV: Rev B | SVN REV: Not In VersionControl |
|                                     | TID #: TIDA-00377                |            |                                |
| PLOT NAME = Bottom Assembly Drawing | GENERATED : 8/25/2016 5:49:52 PM |            | TEXAS INSTRUMENTS              |